



SADLER EAST BUILDING 2

1251 Sadler East Dr., San Marcos, TX 78666

CLASS A MEDICAL OFFICE SPACE
3,641 SF FOR LEASE



- Up to 3,641 SF available
- Brand New Construction
- Directly adjacent to **Central Texas Medical Center**
- Easy access to I-35
- Full-service property with professional management on-site
- **Call today to schedule a tour!**



Building 1
3,658 SF
FOR LEASE

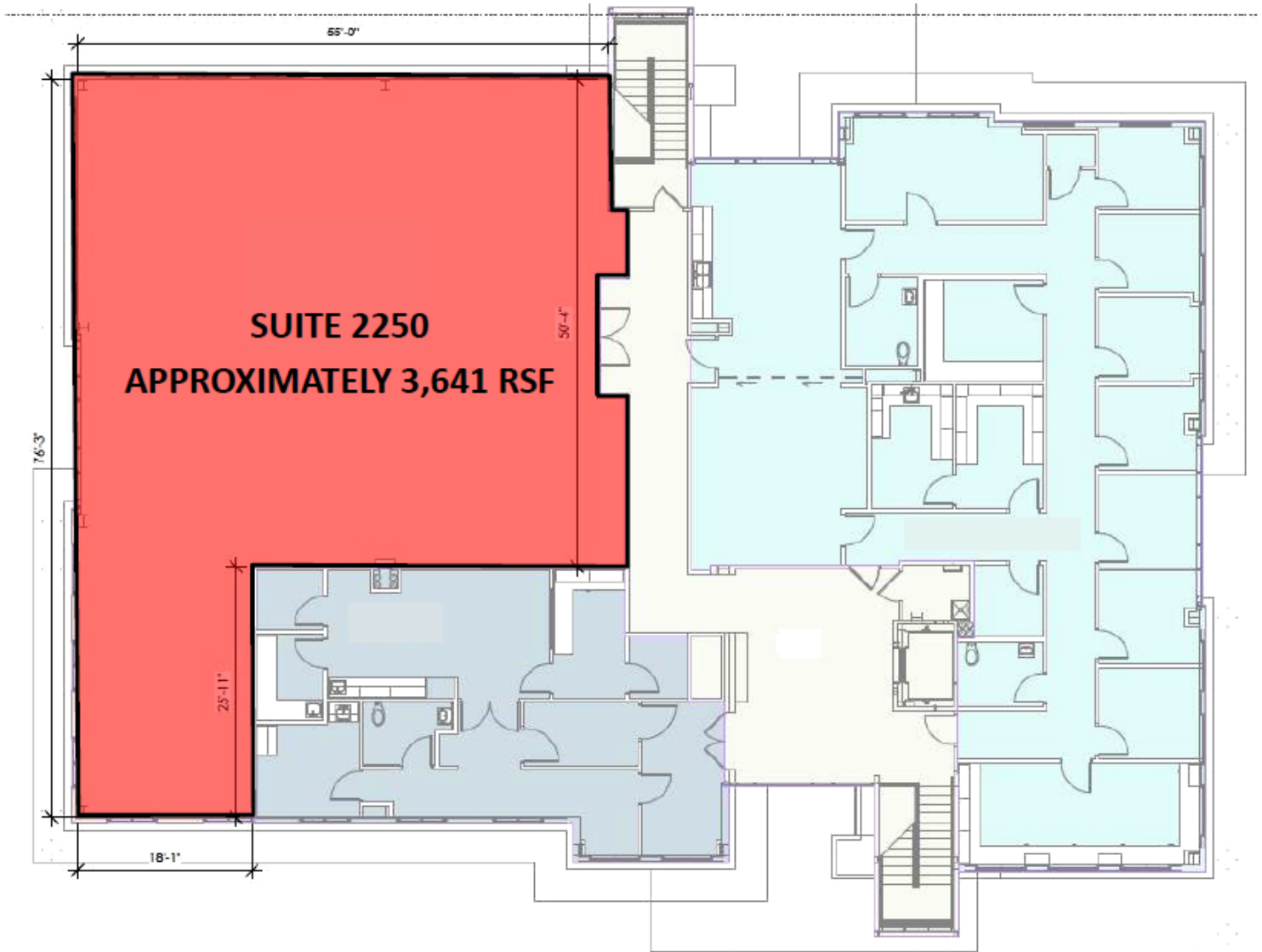
Building 2
3,641 SF
FOR LEASE

Building 3
18,000 SF
2 Floors
RELEASE

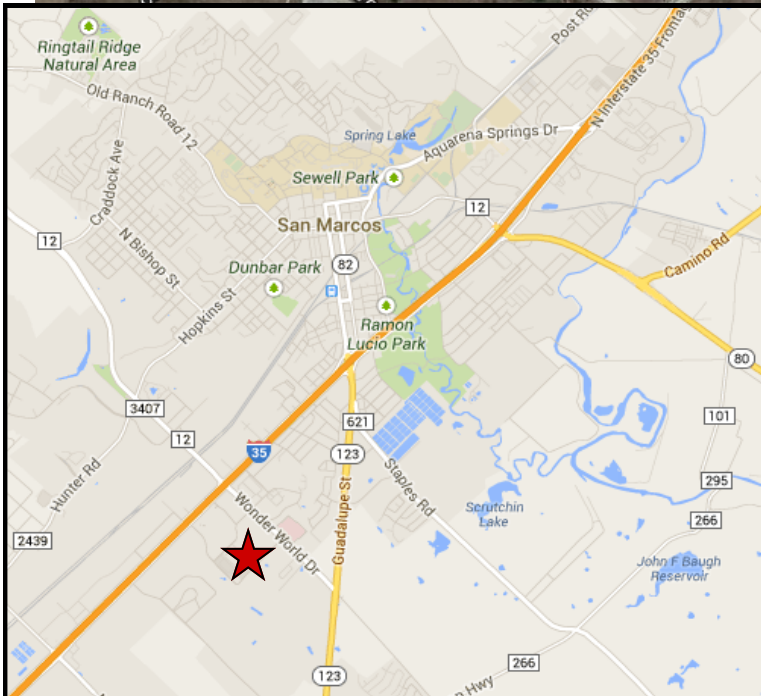


Floor Plan - Suite 2250

Sadler East Office Plaza



APPROXIMATELY 3,641 RSF



DEMOGRAPHICS (2018)

MILE(S)	1	3	5
Daytime Population	4,300	43,553	64,551
Total Population	6,323	40,178	75,111
Average HH Income	\$43,015	\$43,057	\$38,052